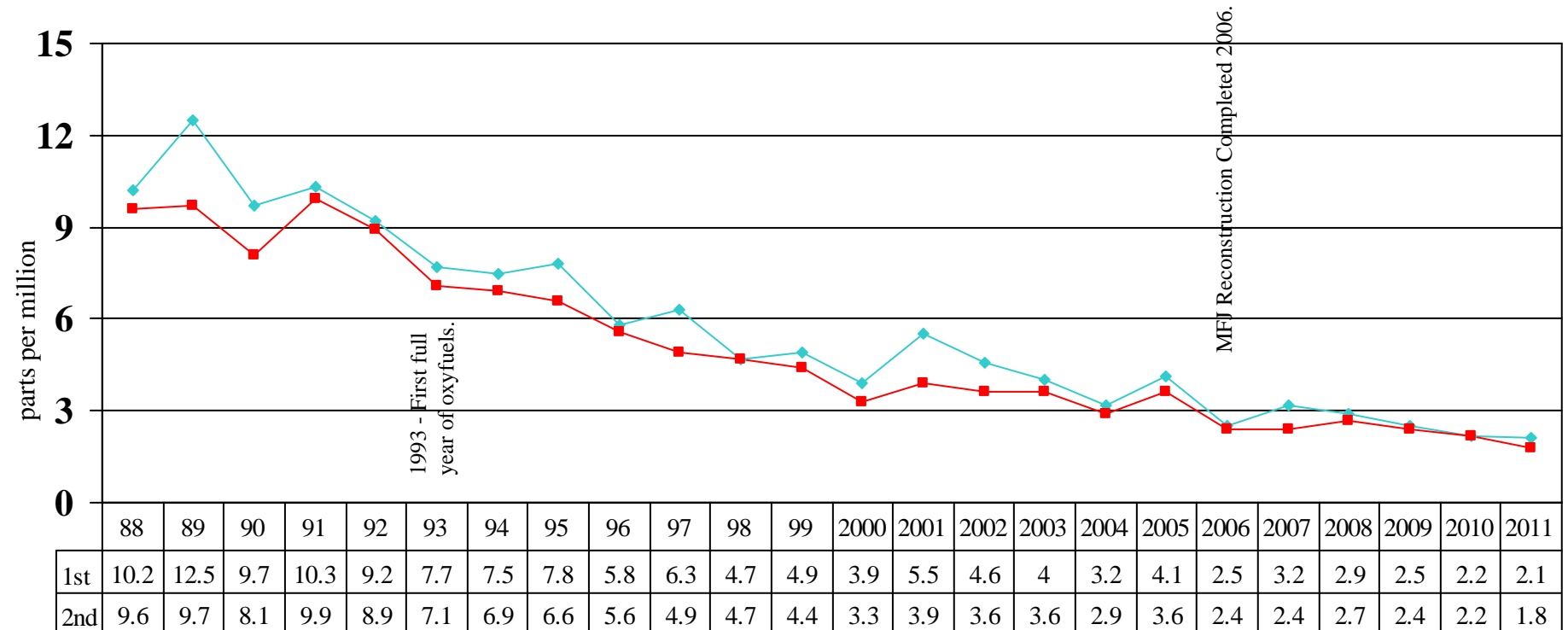


Missoula Carbon Monoxide Levels

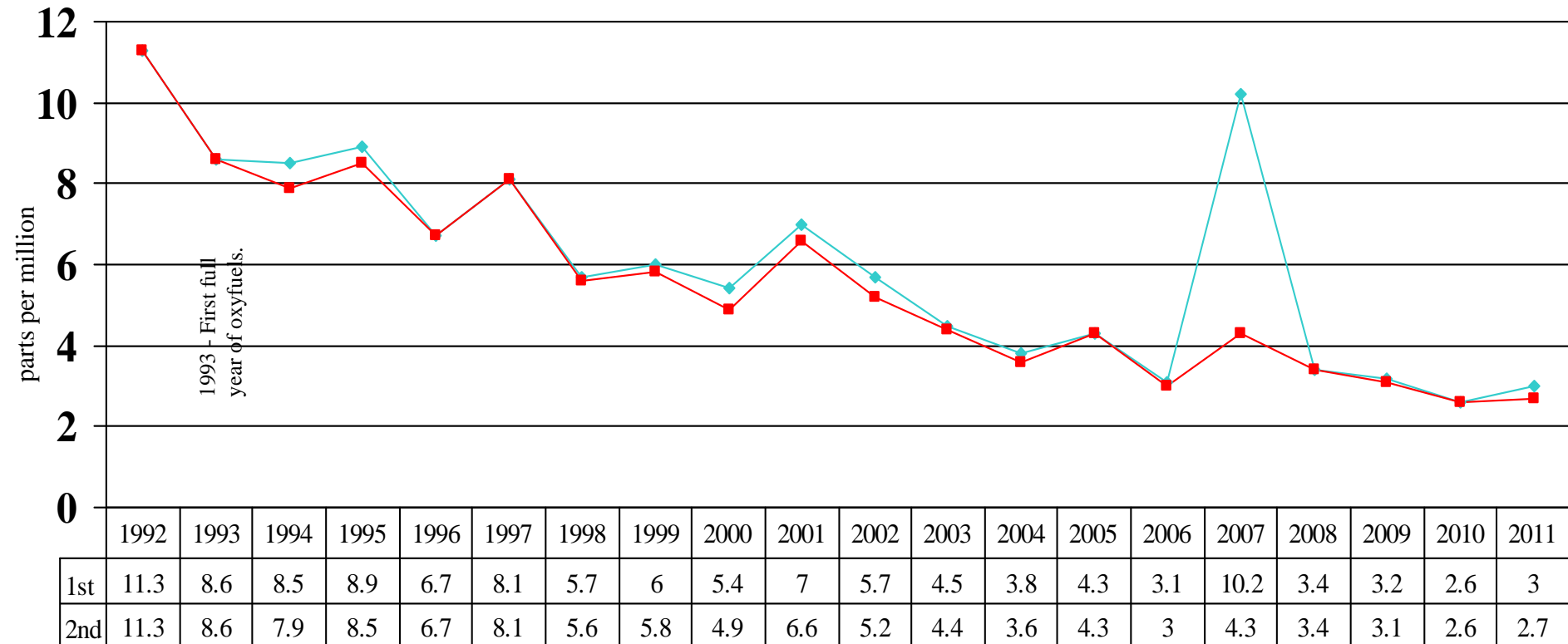
1988-2011 Malfunction Junction
1st and 2nd Highest 8-Hour Average



Federal 8-Hour Average Standard = 9 parts per million, not to be exceeded more than once per calendar year. Carbon monoxide monitoring at Brooks, South and Russell (Malfunction Junction) ended March 31, 2011.

Missoula Carbon Monoxide Levels

1992-2011 Malfunction Junction
1st and 2nd Highest 1-Hour Average



National Ambient Air Quality Standard for 1-hour CO average is 35 parts per million. Carbon monoxide monitoring at Brooks, South and Russell (Malfunction Junction) ended March 31, 2011.